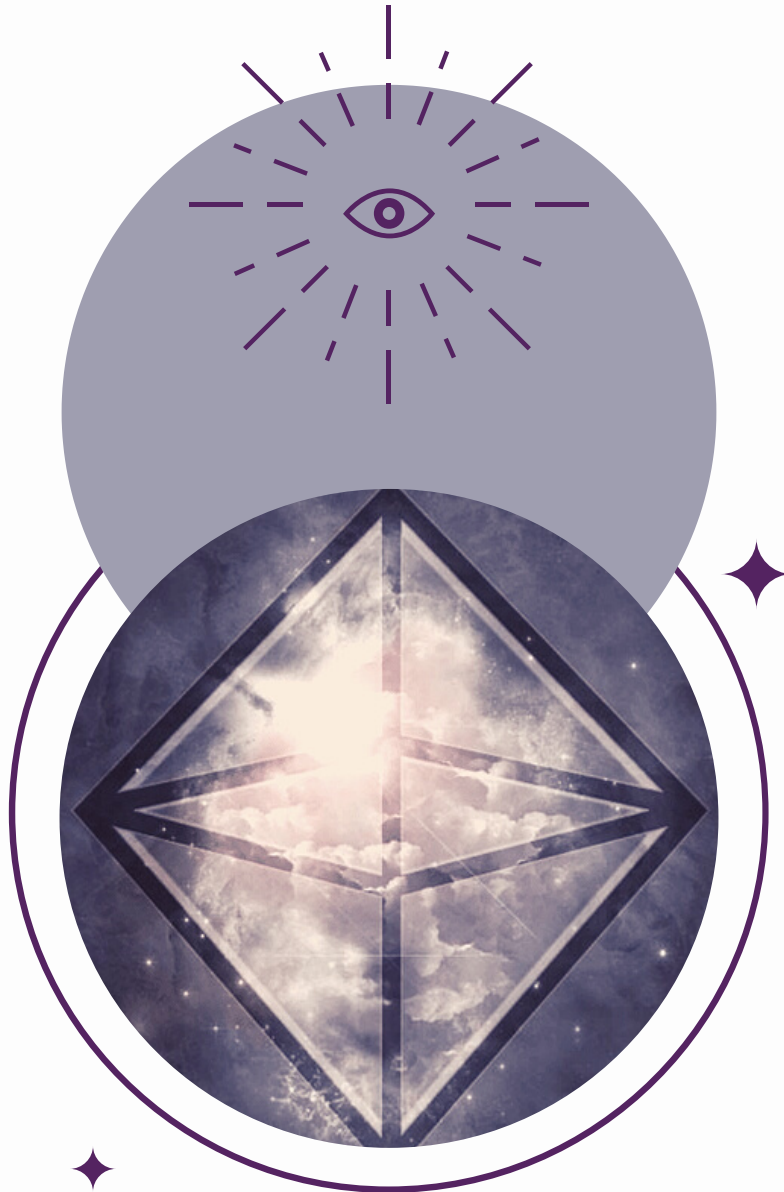


MASTER ACTIVATION SERIES

S  
E  
L  
F

L  
O  
V  
E



Tuning The Templates  
of new balance

[WWW.AWAKENING-ESSENCE.COM](http://WWW.AWAKENING-ESSENCE.COM)



Suzanne Schevene

FACILITATOR/INSTRUCTOR

I first came across the Electro Magnetic Field (EMF) Balancing work in 2000. It was instrumental in changing my life, helping me to stand up and take a step forward after my "dark night of the soul" when I was wiped out on all levels.

I became a Practitioner and Instructor that same year. Over the years the work has continued to developed and quite recently we've reached a point in our evolution that more of our Soul Essence can become active. The time has come.

It is this advanced energy work that I humbly offer to you, to activate more of your energetic structures supporting you in your growth and development.

And I am in deep gratitude for Peggy Phoenix Dubro who brought through this work of the Divine Feminine to assist humanity in its evolution.

[WWW.AWAKENING-ESSENCE.COM](http://WWW.AWAKENING-ESSENCE.COM)

# A bit of History

To the right you can see an aspect of your energy anatomy called the Universal Calibration lattice (UCL). It is an extension of the chakra system.

We all have one but it varies in strength, flexibility & development. The healthier your flow and structures, the more you live in peace, harmony and joy - no matter what is going on around you. The classic EMF Balancing work works with this structure.



The **Templates of New Balance** is an evolutionary system within your energy anatomy composed of 36 octahedrons of light & energy (only some are shown). They are filled with your unique combination of symbols and energy patterns, much like your fingerprints. They are foundational tools for you to hear and know your Innate Wisdom with greater clarity. These Templates represent our ability to awaken to a new level of the reality we live in and how to make a difference on many levels. We are ready and the time is now!

# Our First Four Weeks

Heart & Mind Coherence 01  
Open the flow and create a collaborative foundation of wisdom and love

---

History's Wisdom 02  
Integrate your talents, skills & abilities in a peaceful sense of empowered confidence

---

Connected Core Energy 03  
Strengthen you co-creative resonance and energetic presence

---

Future Potential 04  
Merge energy & information that will assist you as you move forward to create

---



# Our Next Four Weeks

## Infinite Love

Focus on the alchemy of heart centered presence for living energetically aware

---

05

## Infinite Compassion

In the balance of giving & receiving your energy of compassion increases exponentially

---

06

## Infinite Presence

Focus on full presence & completeness while beginning anew at the same time

---

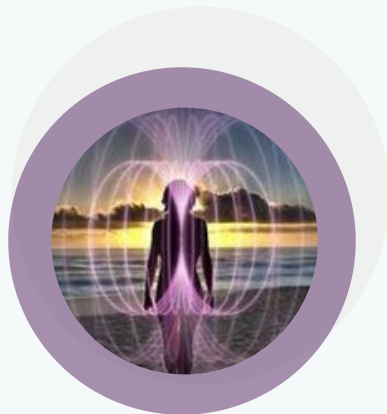
07

## Infinite Wisdom

Tune the energies of light within your brain with energy of your Innate Intelligence

---

08



# Our Final Four Weeks

## DNA Communication

The 12 layers of DNA are the focus of this energy session

---

09

## Be the Nurturing Parent

Transform as you recognize the archetypes of mother & father contained within

---

10

## Be the Beloved

Embrace Self and open to the frequency of love at the heart of the Universe

---

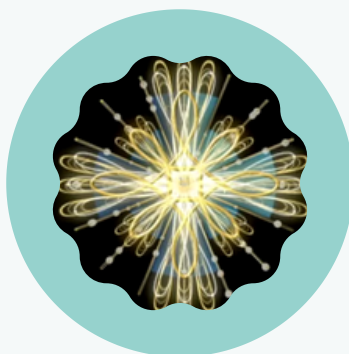
11

## Be the Evolutionary

Your life is your work; your life is your legacy. What does that mean to you?

---

12





# Join us in the Tuning

You do not need to take all of them, but they do build upon one another so it is recommended.

The activation sessions are like a guided meditation but a bit more active as you are holding, touching and tapping various energy centers.

If you have questions, feel free to get in touch with me at [SSchevene@gmail.com](mailto:SSchevene@gmail.com). I look forward to seeing you in class.

[WWW.AWAKENING-ESSENCE.COM](http://WWW.AWAKENING-ESSENCE.COM)

*Thank you for being the brilliant light  
Being that we know you to be.  
Shine brightly.*

S  
E  
L  
F

L  
O  
V  
E

# Thank you for your interest!



## Let's stay in touch

Always remember - when you begin to follow your inner guidance, a sense of wonder shows up along with greater clarity, peace & integration.

Listen to your guidance. It will serve you well. And if you can't quite tap in, please do consider these Activations, for they will assist your process in learning how to listen.

Be gentle with yourself and take exceptional care. You matter, a lot!

**SUZANNE SCHEVENE**



[WWW.AWAKENING-ESSENCE.COM](http://WWW.AWAKENING-ESSENCE.COM)



# Master Activation Series



## EMF BALANCING TECHNIQUE

Having your energy flowing well nourishes your body, mind & emotions creating greater wholeness in your life. Each of the sessions work within your energy system as if you were building a house. It starts with the foundation and moves up from there creating a total energetic clearing & realignment through a series of balancing sessions (Phases).



## TEACHER OF TEACHERS

This Master Activation Series enables the reading and translations of emerging lesson plans for these changing times, as well as strengthening the ability to teach both yourself and others, informally and formally. 2-session series



## THE UNIVERSAL FIELD: UNIQUE & UNIFIED

This Master Activation Series focuses on increasing your potential and capabilities, opening more channels for more energy to download through and into your multidimensional Self. This will further expand your consciousness. 3-session series

